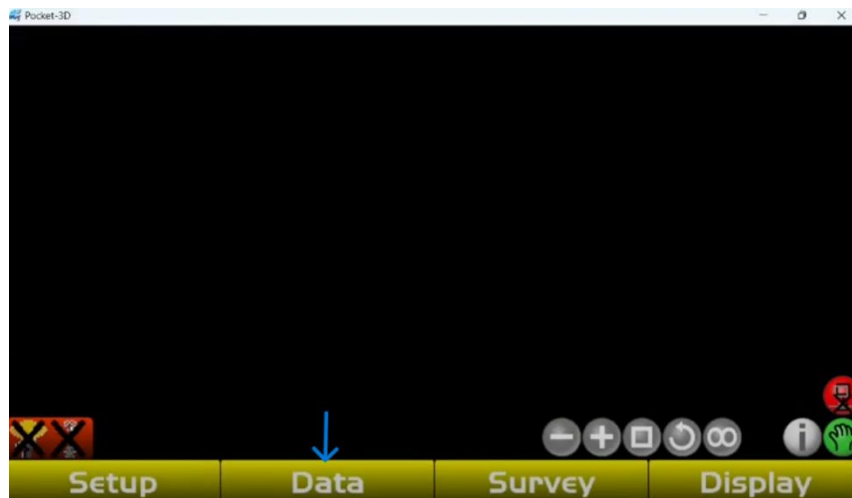


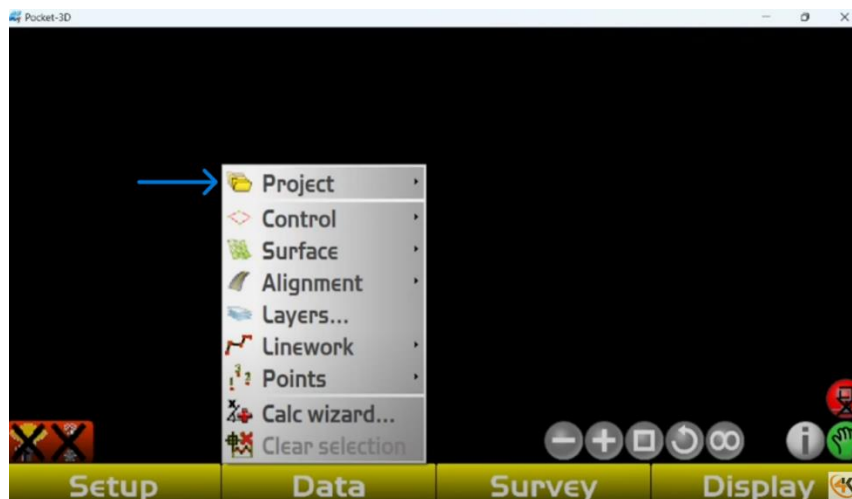


How To Upload a Job on Pocket 3D

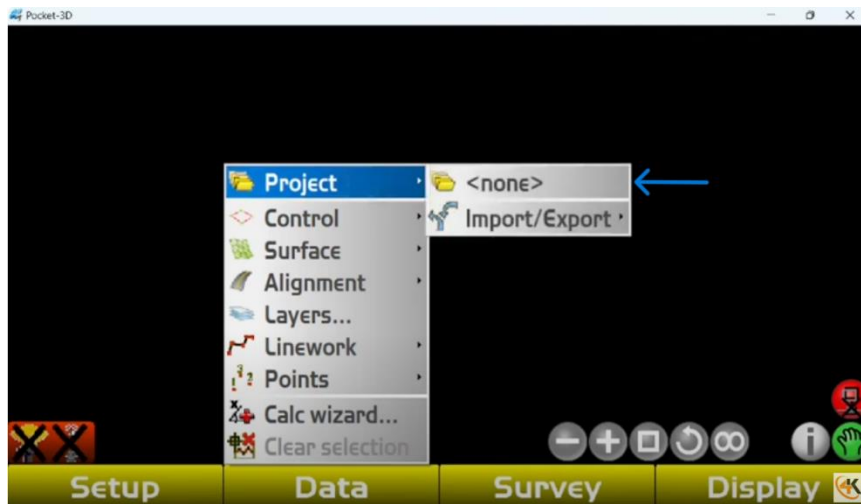
1. Plug in your USB into your data collector then tap on **"Data"**



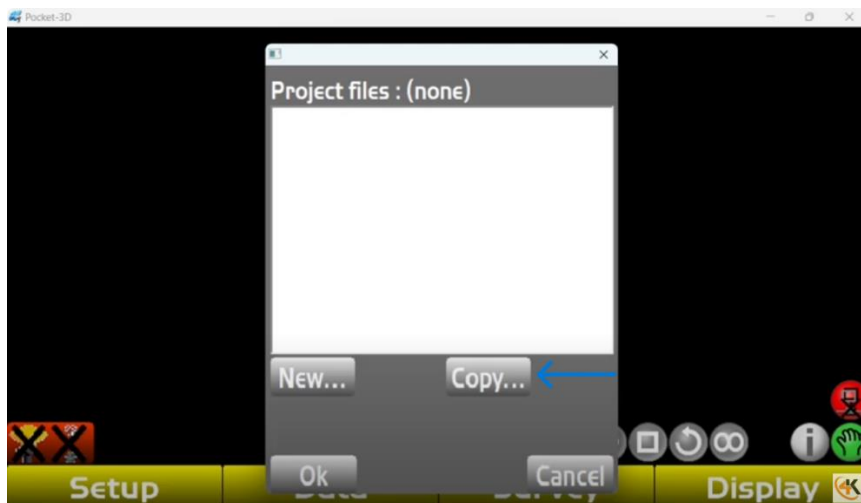
2. Tap on **"Project"**



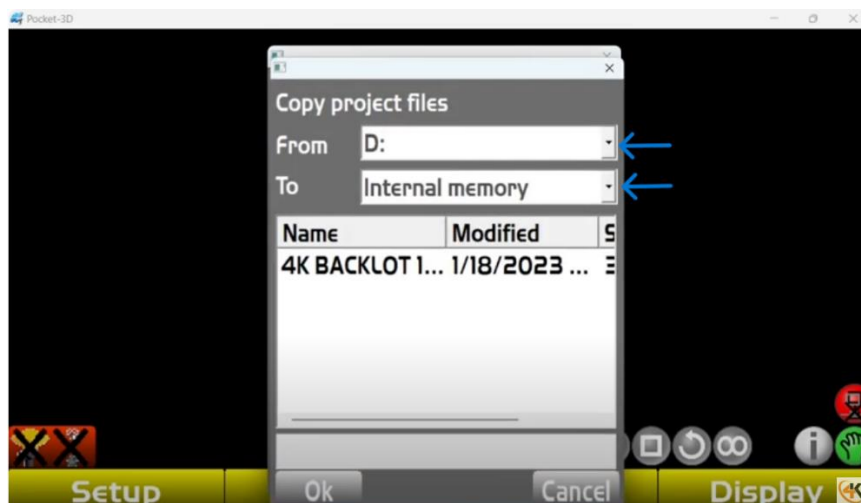
3. Tap on "<none>"



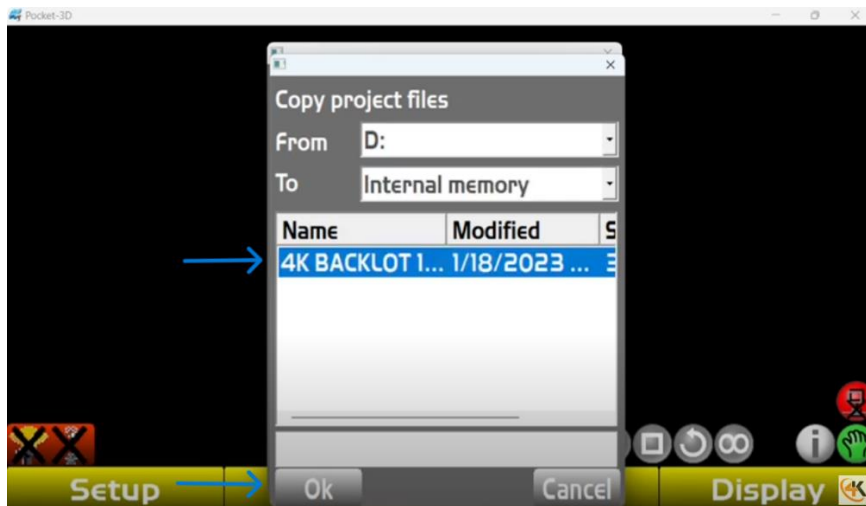
4. Tap on "Copy..."



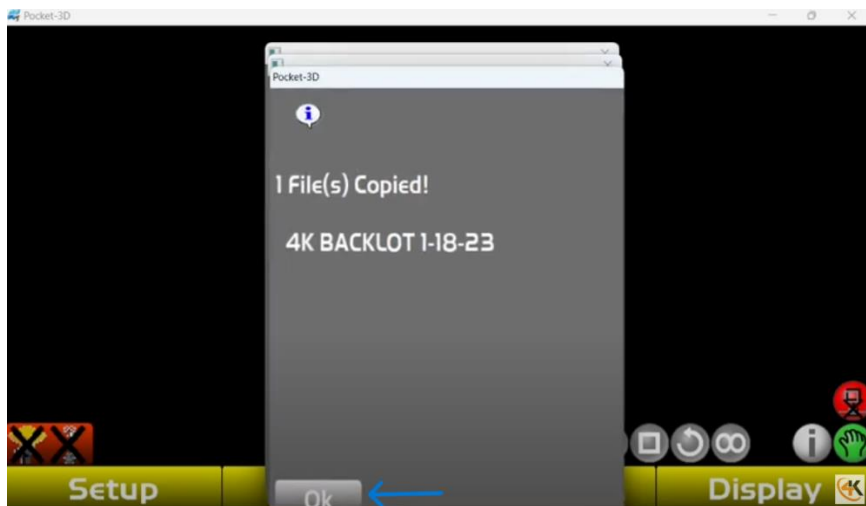
5. Make sure its From "D:" and To "Internal memory," use the drop down menu to change them



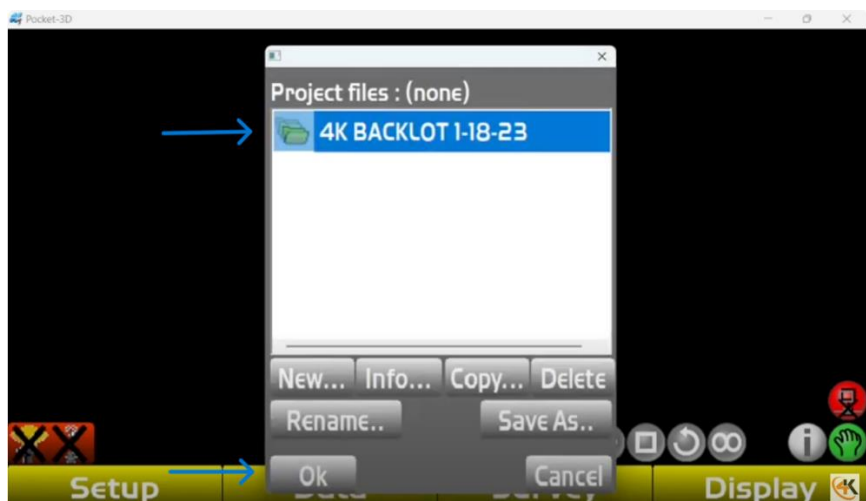
6. Tap on your job so it is highlighted blue, then tap “Ok”



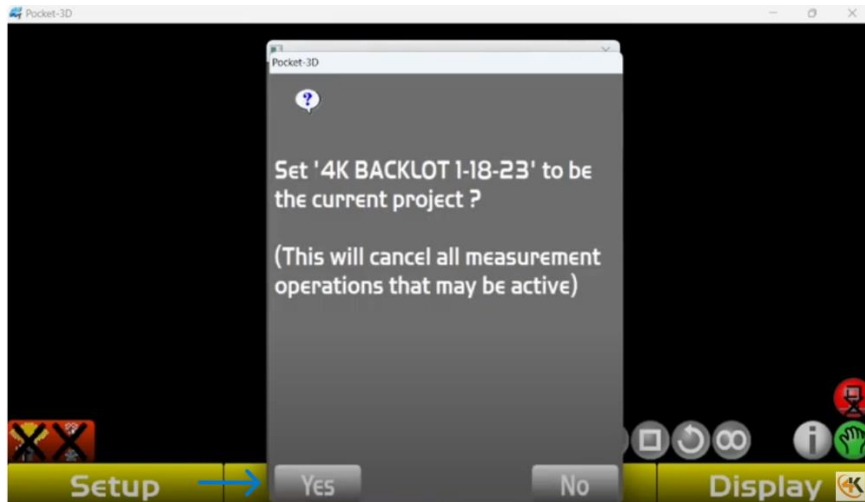
7. Now it will say “1 File(s) Copied” tap “Ok”



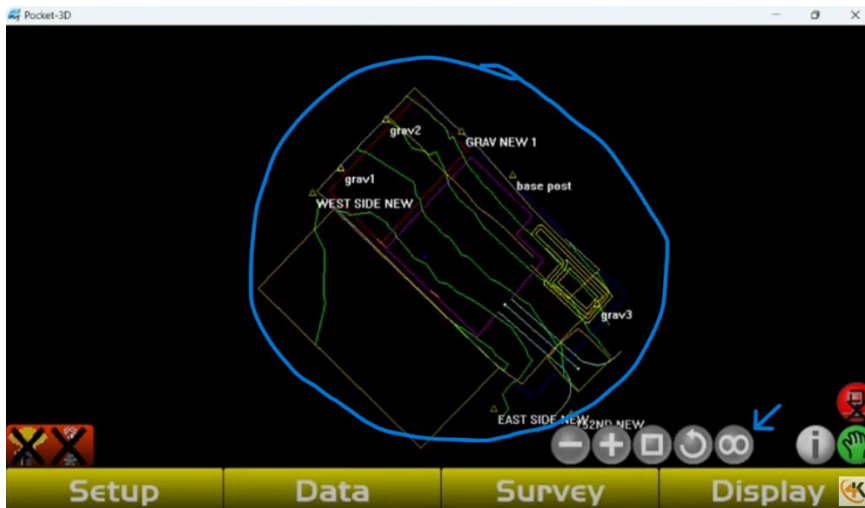
8. Make sure your new job is selected/highlighted blue and then tap “Ok”



9. Tap “Yes”



10. Your job file should be loaded in now, make sure you have your linework, control points, & Stakeout points load. If you don't see it then tap the infinity sign and it should bring you to the center of your job.



11. If having issues with loading in your job give us a call at **360-571-2346**

5900 NE 152nd Ave. Suite 120 Vancouver, WA 98682

Phone: (360) 571-2346 | Fax: (360) 635-4924 - Email: info@4equipment.com